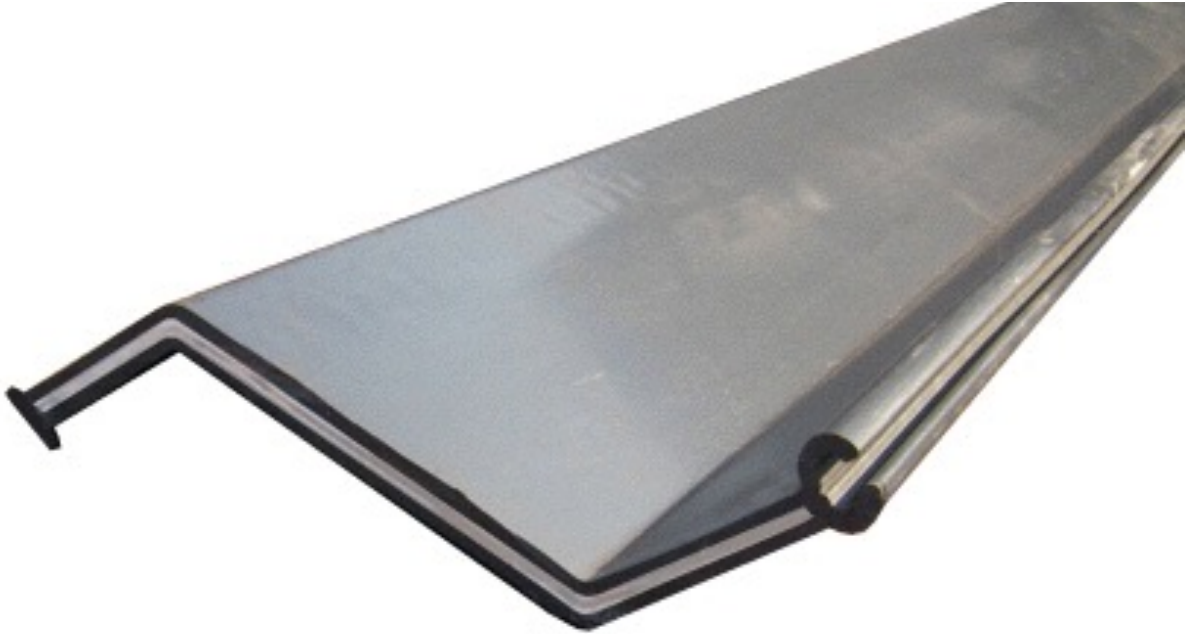


STEEL PLASTIC WALL

the revolution in sheet piles



STEEL CORE SHEET PILE

STEEL PLASTIC WALL is an extremely innovative and revolutionary sheet pile. Thanks to the combined use of steel and plastic it assures, for the first time, characteristics of high strength, flexibility and durability.

Our steel core pile is manufactured thanks to a patented system which allows to produce it continuously and automatically.

It is currently available in two different models in which the internal thickness of the steel plate can vary from 1 mm. to 4 mm. according to the required strength.

During the extrusion process the internal steel plate is coated on both sides by a layer of plastic material. The metal profile is then completely embedded inside the pile.

Our innovative sheet pile, reaches very high structural standard in terms of compression, cutting and tensile strength similar to conventional steel sheet piles with the huge advantage of maintaining a low weight and high resistance to atmospheric agents. The result is a long lasting pile at a competitive price. This patented new pile was conceived to optimize the mechanical strength of conventional pvc sheet piles.

By varying the thicknesses of the steel plate inside the pile it is possible to obtain the desired degree of resistance.



Max. Length = mt. 12. Only in special cases are achievable superior lengths.

* Zinc coating (of the steel plate) is available on request.

The complete coating of the steel sheet plate, during the extrusion process, produces a multiplier effect on the mechanical seals, facilitating the insertion of the sheet pile in the ground during installation.

Thanks to the complete plastic coating STEEL PLASTIC WALL is particularly suitable for use in brackish waters since the internal steel plate does not rust or deteriorates as a result of immersion.

MOD. SPW 300



Steel plate thickness: mm. 1, plastic coating: mm 2 per side.

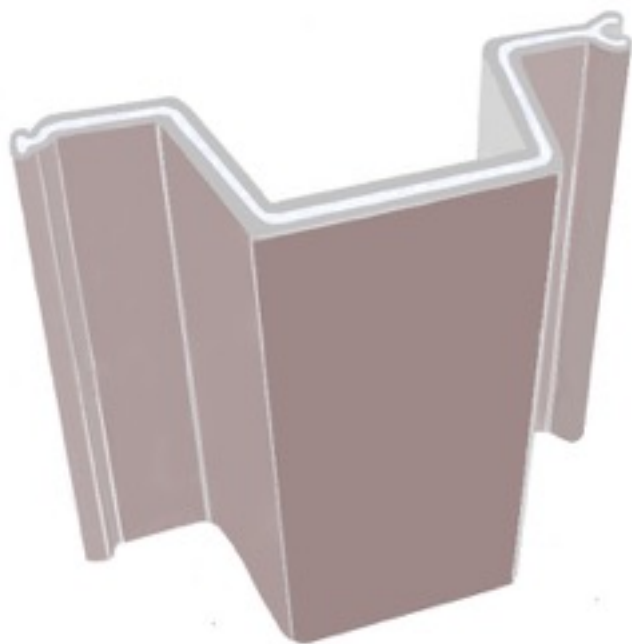
Total sheet pile thickness: 5 mm.

MOD. SPW 500



Steel plate thickness: mm. 1, plastic coating (light gray): mm 3 per side.
Total sheet pile thickness: 7 mm.

MOD. SPW 610

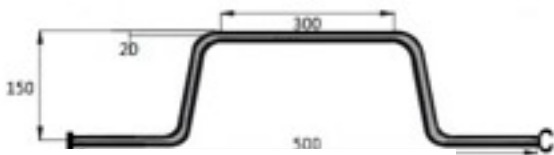


Steel plate thickness: mm. 3, plastic coating: 3 mm. per side.
Total sheet pile thickness: 9 mm.

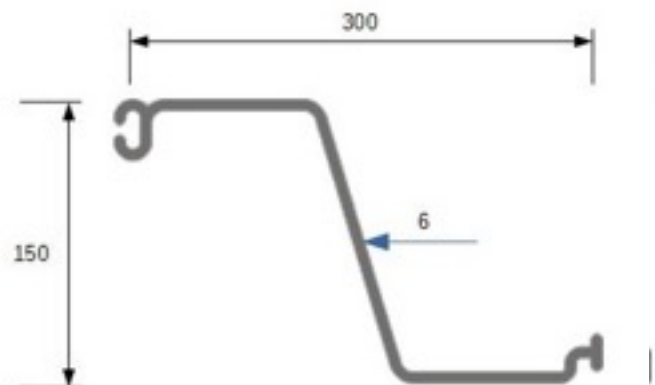
PATENTED **Steel Plastic Wall**

MOD.		Steel thickness	Plastic thickness	Sheet pile thickness	Sheet pile weight per sq.mt (with steel core).	Sheet pile weight per sq.mt (with Aluminum core).
SPW	500	mm. 1	mm. 4	mm. 5	14.41	/
		mm. 2	mm. 5	mm. 7	22.30	/
		mm. 3	mm. 6	mm. 9	29.00	18.30
		mm. 4	mm. 8	mm. 12	39.00	24.50
SPW	300	mm. 1	mm. 4	mm. 5	14.41	/
		mm. 2	mm. 5	mm. 7	21.50	/
		mm. 3	mm. 6	mm. 9	29.00	18.30

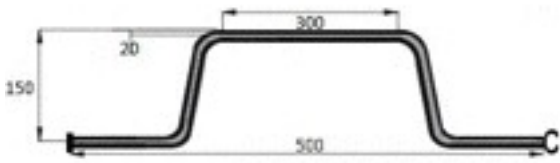
MOD. SPW 610 e MOD. SPW 500



MOD. SPW 300

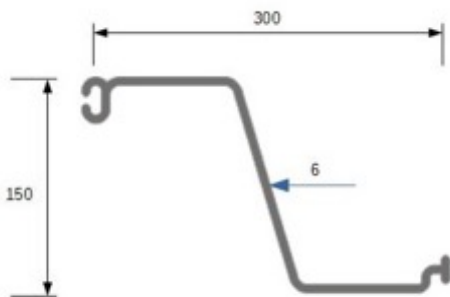


MODEL SPW 500/610



Section width mm.	150			
Section depth mm.	500			
Thickness mm.	5	7	9	12
Section modulus Cm ³ /m	850.2	1098.1	1350.3	1720.4
Moment of inertia Cm ⁴ /m	5.426	9.321	15.840	27.902
Allowable moment Kn/m	16.1	19.0	25.2	32.3
Ultimate moment Kn/m	32.1	37.5	50.3	66.6
Steel plate thickness mm.	1	2	3	4

MODEL SPW 300



Section width mm.	300		
Section depth mm.	150		
Thickness mm.	4	5	6
Section modulus Cm ³ /m	4.10	6.20	9.50
Moment of inertia Cm ⁴ /m	3.600	5.800	9.900
Allowable moment Kn/m	9.6	14.8	20.1
Ultimate moment Kn/m	21.3	30.5	42.1
Steel plate thickness mm.	1	2	3